

# Fernbrooke Architectural Review Board Summer 2021 Bulletin

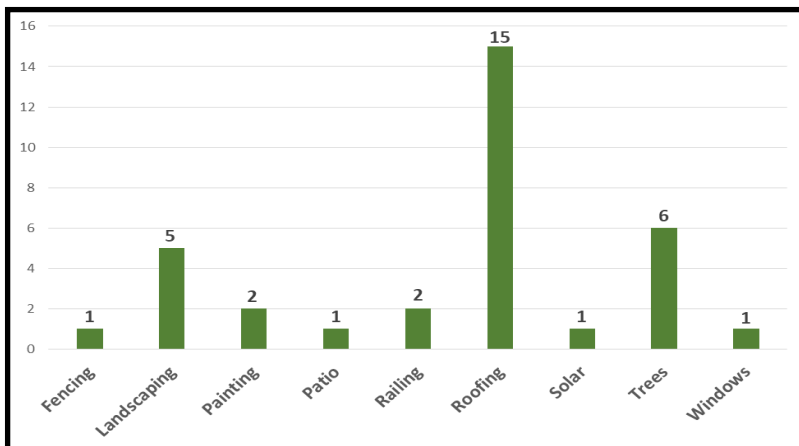
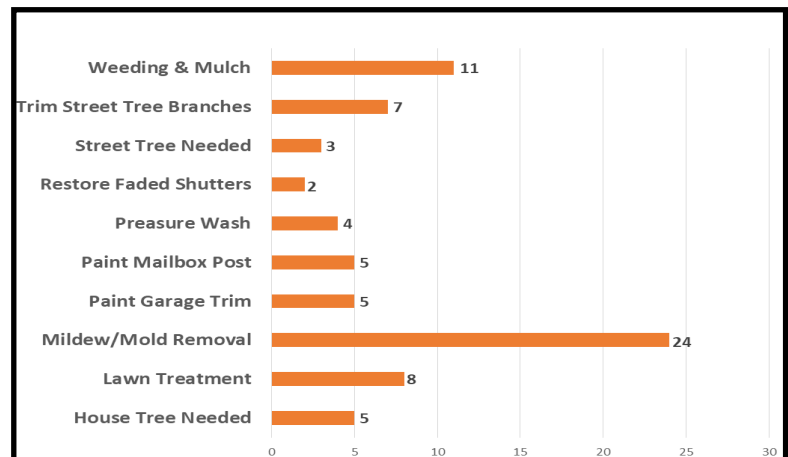


Dear Homeowners,

The Architectural Review Board (ARB) conducted their annual Spring Inspections on May 21st and a total of 45 inspection notices were sent out to homeowners. A large number of these notice items were for minor infractions such as mildew/mold removal and weeding/mulch. During the re-inspections in July, a total of 42 out of 45 notices were completed and approved and only 3 violation letters were sent out. The ARB Committee would like to thank all the homeowners who complied with the inspections.

**Remember:** Inspections are done year round and the value of your home is directly related to the condition, appearances, and aesthetics of our community as a whole.

*Note: The chart to the right shows the numbers of inspection notice items to be completed by categories.*



As of June 30th, the ARB Committee received 34 Application Requests for exterior maintenance and improvements. The majority of these requests were for new roofs, landscaping, and tree replacements.

*Note: The chart to the left shows the number of ARB Application Requests by categories.*



**Reminder:** Any exterior changes to your house must meet the ARB guidelines and be approved by the ARB Committee. Please contact Jennifer Karge @ APM for any questions or to obtain an ARB Application Request form.

email: [JKarge@accesspm.com](mailto:JKarge@accesspm.com)

phone: (856) 802-1055 Ext. 114

*Note: If contacting by email, please include your house address in the subject line.*

## ARB Committee Members

Nancy Thomas  
Elizabeth Farrands

Ralph Hendrickson  
Bryan O'Neal

Ellen Woeller (APM)



## What is the Spotted Lanternfly?

The Spotted lanternfly (SLF) is an invasive insect from Asia that has spread throughout Pennsylvania since its discovery in Berks County in 2014. SLF feeds on the plant sap of many different plants including grapevines, maples, black walnut, and other important plants with the capability to decimate local agriculture and native trees. They are currently active in Pennsylvania, as well as the states of New Jersey, Delaware, Maryland, Virginia, West Virginia, New York, Connecticut and Ohio.

## The Spotted Lanternfly found in our Community!

**DO NOT** call or email the County, State, etc. to report Spotted Lanternfly sightings. The Spotted Lanternfly has now been reported in all of the Burlington County Parks and regional trails as well, so there is no need to contact Burlington County Parks with your reports. If you are in one of the quarantined counties of **Burlington**, Camden, Gloucester, Hunterdon, Mercer, Salem, Somerset or Warren, you **NO LONGER** need to contact the New Jersey Department of Agriculture or any other government office to report sightings.

## Help Battle the Spotted Lanternfly!

Besides squishing them, one suggested natural method to eliminate is to spray them with a mix of dish soap and water, with the suggested ratio of 2 ½ tablespoons of detergent in 1 gallon of water or as much as 10 tablespoons per gallon. Another common trap is to place Pine Sol or another brand of all-purpose cleaner in a bowl with two packets of sugar. The scent of the mix attracts the nymphs and they should drown in the water bowl. There are pesticides that can be applied, check with you local Garden Center or Pest Exterminator Service provider.

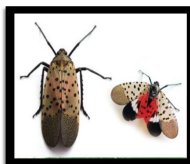
### SPOTTED LANTERNFLY STAGES



1st-3rd Instar seen in May through early July



4th Instar seen in July through early September



Adults found in August - November

Links to additional trap designs and information can be found on the Burlington County Parks' lanternfly resources page at: [www.co.burlington.nj.us/DocumentCenter/View/13719/Spotted-Lanternfly-Resources](http://www.co.burlington.nj.us/DocumentCenter/View/13719/Spotted-Lanternfly-Resources)